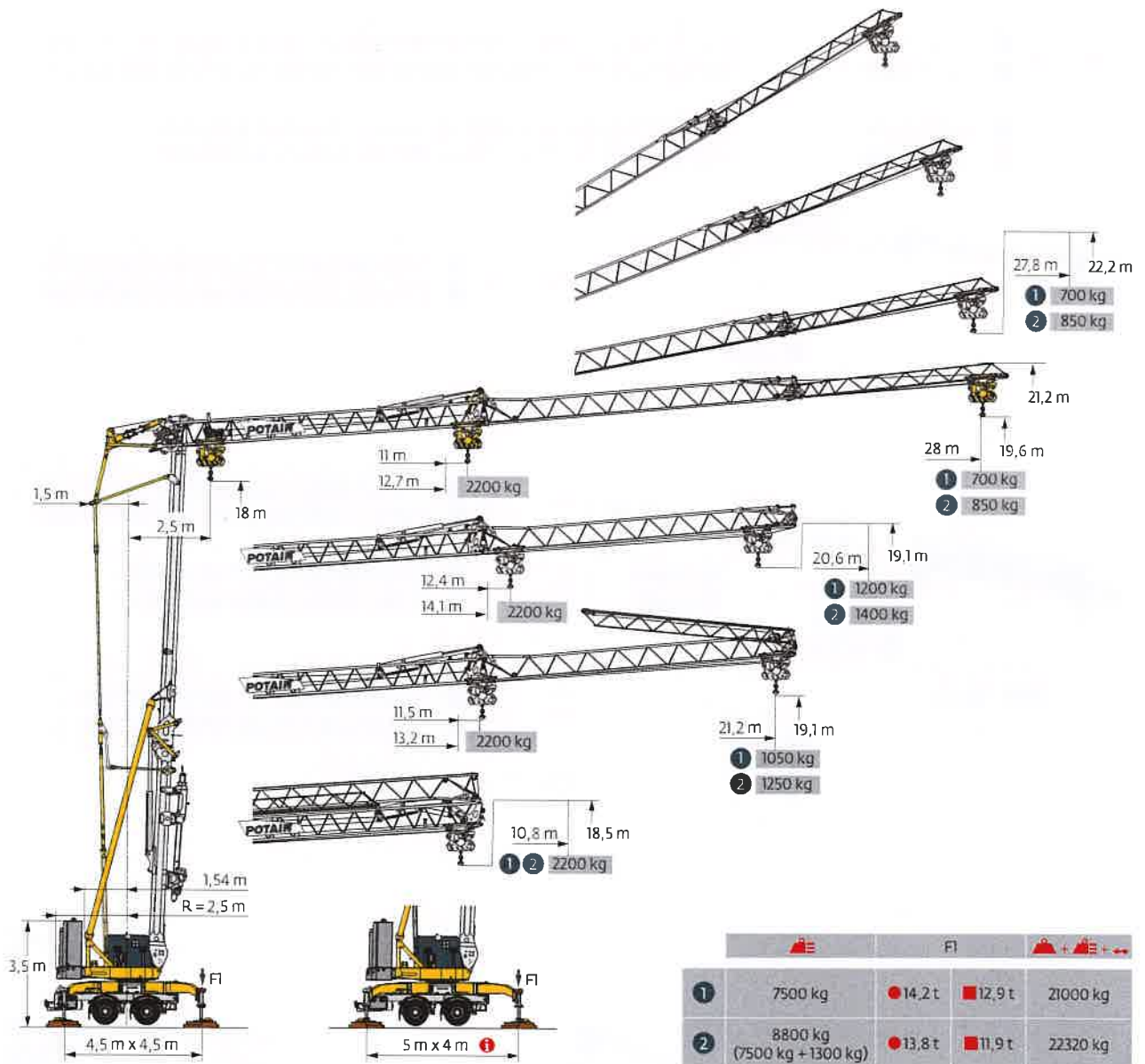
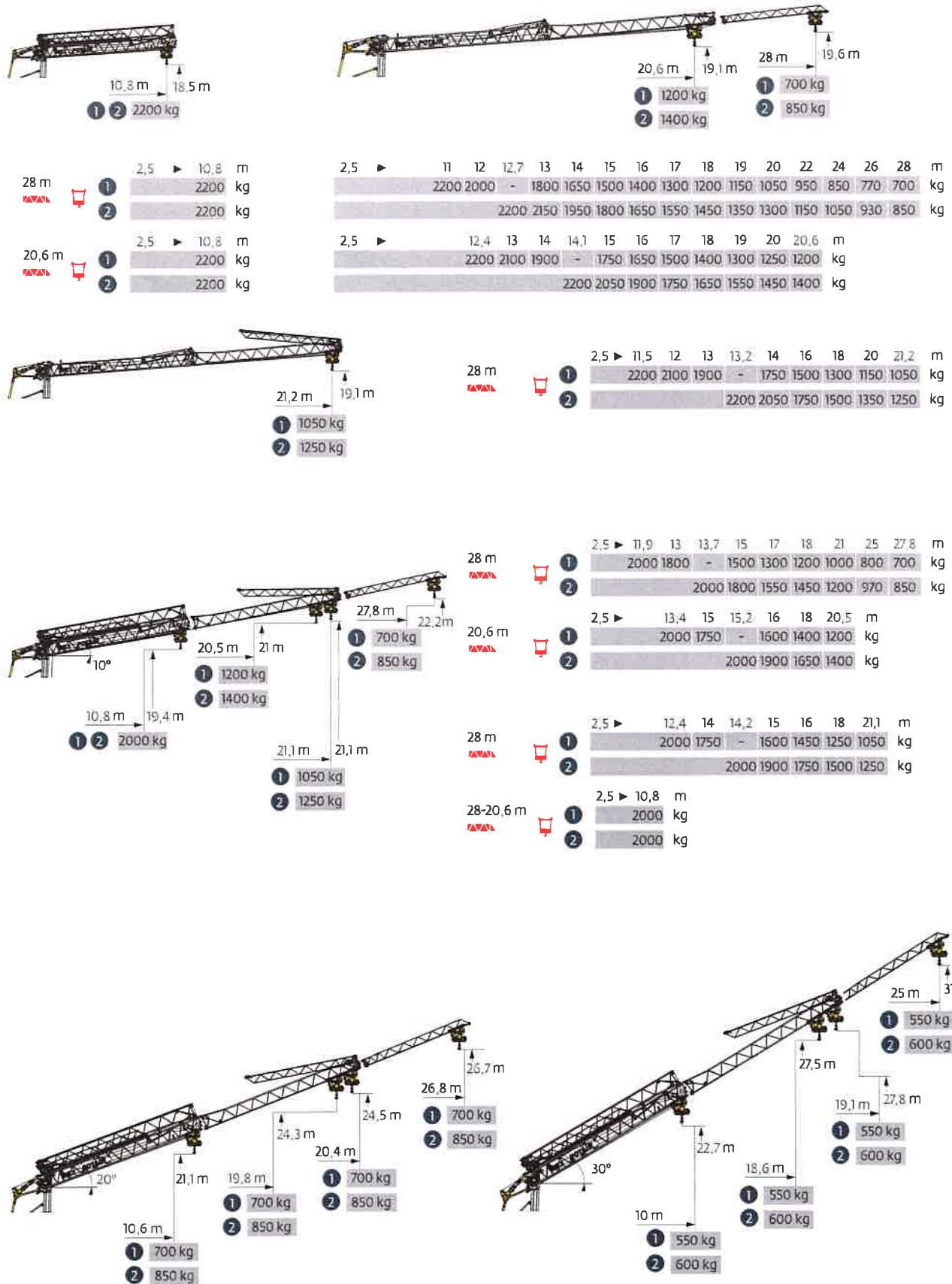


## Hup M 28-22










- Smart Set-up
- Drive Control
- Power Control
- Steering axle
- CraneSTAR Diag
- Generator
- Hydraulic Levelling
- Mechanical Jacks
- Top Site

Courbes de charges / Lastkurven / Load curves / Curvas de cargas / Curve di carico  
 Curvas de carga / Кривые нагрузок

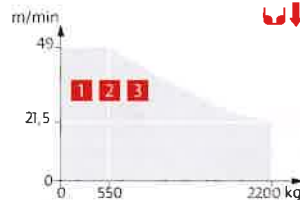
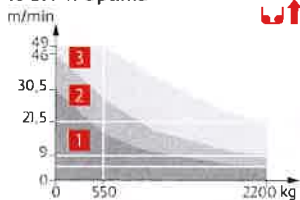


Mécanismes / Triebwerke / Mechanisms / Mecanismos / Meccanismi  
 Mecanismos / Механизмы

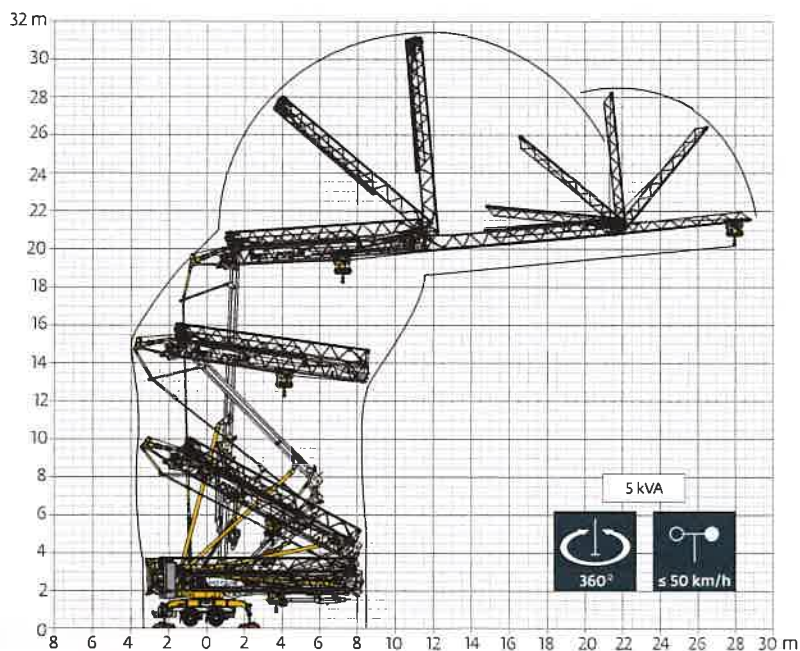
230 V - 50 Hz 400 V - 50 Hz 480 V - 60 Hz								ch - PS hp	kW	
	10 LVF 11 Optima	230 V $\neq$ 20 A <b>1</b>	m/min	1,6	5	10,5	12	17	3,3	2,4
		kg	2200	2200	1000	850	550			
		230 V $\neq$ 32 A <b>2</b>	m/min	1,6	9	18,5	22	30	5,2	3,8
		400 V $\neq$ 480 V <b>3</b>	m/min	1,6	21,5	38,5	42	49	10	7,5
		kg	2200	2200	1000	850	550			
	2 DVF 4 Optima	m/min	1,7	28	35	41	47,5	2	1,5	
		kg	2200	2200	1100	600	200			
	HPS 31	tr/min U/min rpm	0 → 0,8					4	3	

 IEC 60204-32	 kVA
230 V (+10% -10%) 50 Hz 400 V (+10% -10%) 50 Hz 480 V (+6% -10%) 60 Hz	230 V 20A : 4,6 kVA 230 V 32A : 7,4 kVA 400 V / 480 V : 13 → 9 kVA 

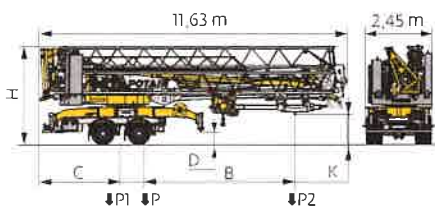
10 LVF 11 Optima



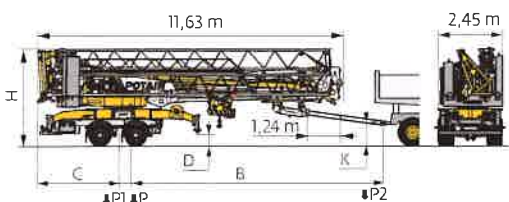
Montage / Montage / Erection / Montaje / Montaggio  
 Montagem / Монтаж



Transport / Transport / Transport / Transporte / Trasporto  
Transporte / Транспортировка



	km/h		B (m)	C (m)	D (m)	H (m)	K (m)	P (kg)	P1 (kg)	P2 (kg)
TS014/J218D	25	7500 kg	6,53	3,14	0,38	3,59	1,12 / 1,2	20800	19550	1160
	25	8800 kg	6,53	3,14	0,38	3,59	1,12 / 1,2	22120	19280	2730
TS014/J217D (EBS) - TÜV	80	7500 kg	6,6	3,1	0,45	3,68	1,2 / 1,28	21000	19600	1300
	80	8800 kg	6,6	3,1	0,45	3,68	1,2 / 1,28	22320	19340	2860



	km/h		B (m)	C (m)	D (m)	H (m)	K (m)	P (kg)	P1 (kg)	P2 (kg)
TS014/J218D	25	7500 kg	10,21	3,14	0,38	3,59	0,67 / 0,87	20800	19910	800
	80	7500 kg	10,27	3,1	0,45	3,68	0,75 / 0,95	21000	19980	920
TS014/J217D (EBS) - TÜV	80	7500 kg	10,27	3,1	0,45	3,68	0,75 / 0,95	21000	19980	920

	FR	DE	EN	ES	IT	PT	RU
	Rayon de giration	Schwenk radius	Rear slewing radius	Radio de giro	Paglie di rotazione	Paio de rotação	Угловой габарит
	Réactions en service	Reaktionskräfte in Betrieb	Reactions in service	Reacciones en servicio	Reazioni in servizio	Reações em serviço	Реакция при работе
	Réactions hors service	Reaktionskräfte außer Betrieb	Reactions out of service	Reacciones fuera de servicio	Reazioni fuori servizio	Reações fora de serviço	Реакция в режиме
	Poids à vide, sans lest, sans traits de transport avec fleche max et hauteur standard.	Gewicht ohne Last, ohne Ballast, ohne Transportachsen mit max. Ausläger und Standardhöhe	Weight without load, without ballast, without transport axes, with max. jib and standard height.	Peso en vacío, sin lastre, sin trenes de transporte, con flecha y altura estándar	Peso a vuoto, senza zavorra, senza assali di trasporto, con braccio max e altezza standard	Peso em vazio, sem lastro, sem eixos de transporte com lança máxima e altura standard	Вес без груза, без балласта, без осей для транспортировки, с минимальным вылетом стрелы и стандартной высотой
	Poids total eu last	Ballast-Gesamtwicht	Total ballast weight	Peso total del lastre	Peso totale della zavorra	Peso total do lastro	Общая вес балласта
	Trens de transport	Transportachsen	Transport axles	Trenes de transporte	Assali di trasporto	Eixos de transporte	Оси для транспортировки
	Equipements standards	Standardausrustungen	Standard equipment	Equipamiento de serie	Equipaggiamento standard	Equipamento de serie	Стандартное оборудование
	Equipements optionels	Sonderausrustungen	Options	Equipamiento opcional	Equipaggiamento in opzione	Equipamento opcional	Дополнительное оборудование (опции)
	Lavage	Heben	Lifting	Elevación	Sollevamento	Elevação	Подъем
	Distribution	Katzfahren	Trolleying	Distribución	Distribuzione	Distribuição	Перемещение по стреле
	Orientation	Schwenken	Slewing	Orientación	Rotazione	Rotação	Поворот
	50 Hz Monophasé	50 Hz Einphasige	50 Hz single phase	50 Hz Monofásica	50 Hz Monofase	50 Hz monofásica	Однофазное напряжение 50Hz
	Puissance requise	Erforderliche Leistung	Required power	Potencia Necesaria	Potenza richiesta	Potência Necessária	Потребляемая мощность
	Transport grue totale lésée	Krantransport mit voller Ballastierung	Transport of crane with full ballast	Transporte grúa completamente lastrada	Trasporto gruá completamente zavorata	Transporte de grua totalmente balastada	Перевозка крана с полным балластом
	Function Power Control velocities adapted to the puissance disponible	Funktion Power Control Geschwindigkeiten der Werke werden an die verfügbare Leistung angepasst	Power Control Function winch speeds adapted to the available power	Función Power Control: marchas de los cablesastantes adaptadas a la potencia disponible	Funzione Power Control: velocità degli argani adattate alla potenza disponibile	Função Power Control: velocidades de gancho adaptadas à potencia disponível	Функция контроля мощности Power Control: эксплуатация скорости лебедки в зависимости от доступной мощности
	Neus consulter	Auf Anfrage	Consult us	Consultarnos	Consultateci	Consultar-nos	Проконсультируйтесь у нас
	Document commercial non contractuel. Pour toute information technique se référer à la notice correspondante.	Unverbindliches Vertriebsdokument. Für technische Informationen, siehe die entsprechenden Anweisungen.	This commercial document is not legally binding. For any technical information please refer to the corresponding instructions.	Documento comercial no contractual. Para cualquier información técnica, ver la noticia correspondiente.	Documento commerciale non vincolante, per tutte le informazioni tecniche fare riferimento al catalogo istruzioni.	Documento comercial não contratual. Para qualquer informação técnica complementar consultar as respectivas instruções.	Этот коммерческий документ не является юридическим и является юридическим. Для получения технической информации см. соответствующие инструкции.

